


# NZNO MEMBERSHIP COMMITTEE

Ehara taku toa i te toa takitahi, engari he toa takitini/  
Success is not the work of an individual,  
but the work of many.”



[www.nzno.org.nz](http://www.nzno.org.nz)



We are the  
Members' voice

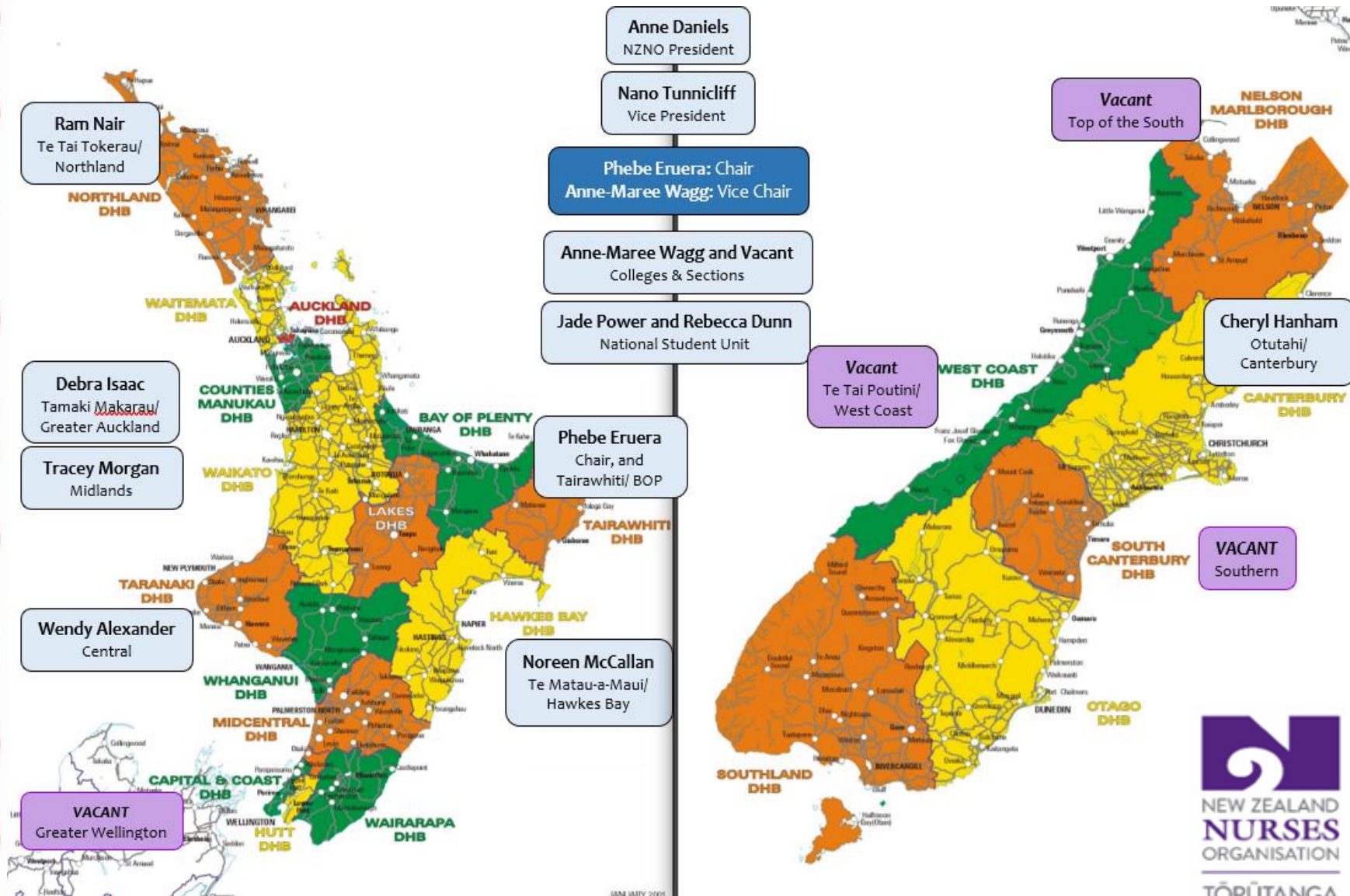


TŌPŪTANGA  
**TAPUHI**  
KAITIAKI O AOTEAROA

[www.nzno.org.nz](http://www.nzno.org.nz)



# NZNO Membership Committee and Regional Boundaries



JANUARY 2001



# What happens at a Membership Committee meeting?



TŌPŪTANGA  
**TAPUHI**  
KAITIAKI O AOTEAROA

[www.nzno.org.nz](http://www.nzno.org.nz)




# What we work on as a committee

# Regular projects

- Florence Nightingale Memorial Fund
- Abstract Committee for the NZNO Conference
- Showcasing our work at events and AGM
- Provide regional feedback quarterly on NZNO's strategic plan and regional issues





# Projects that Membership Committee are currently undertaking

- Honorary Membership
- Workplace Issues Flowchart
- Membership Committee Surveys to inform the Membership Committee priorities (currently on hold due to the Constitutional Review).
- Merchandising



TŌPŪTANGA  
**TAPUHI**  
KAITIAKI O AOTEAROA

# New Work Plans

- **Topic One:** NZNO branding to increase the visibility of NZNO, and to acknowledge member's active involvement.
- **Topic Two:** increase visibility of both industrial and professional arms on NZNO
- **Topic Three:** Further Comments



# He waka eke noa

## *We're all in this waka together*

### Freed to Care, Proud to Nurse

#### **"Our waka, Our way"**

The rear of the waka - taurapa, or stern points the waka into the wind. It represents the involvement of Kaumātua and honorary members.

The kaiārahi or steerers – senior staff/delegates/chairs. Their responsibility is to keep things on track.

The kaihautū represents our leaders – CEO, Kaiwhakahaere, President and Board. They set the beat, giving instructions to the steerers

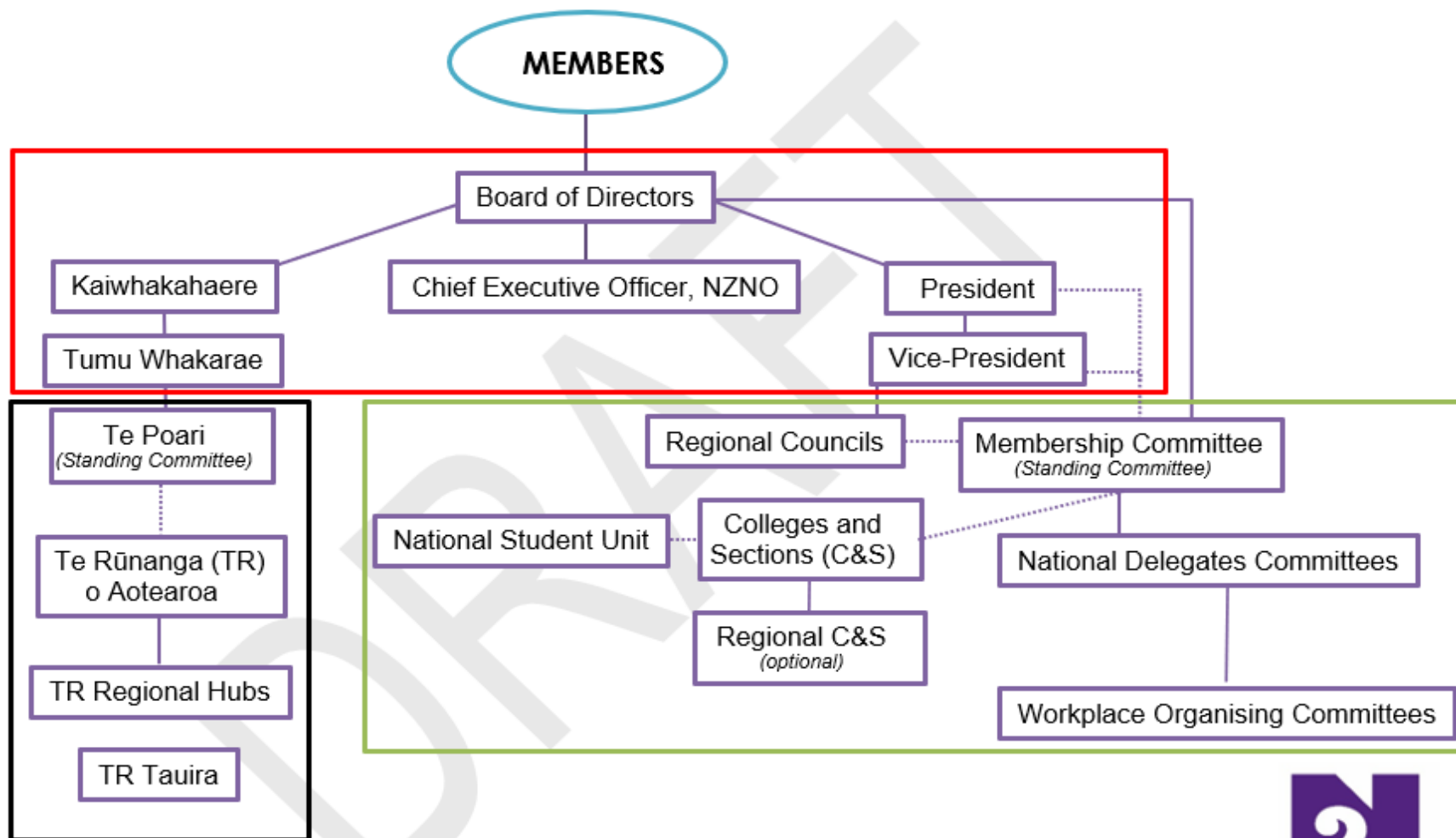
The tauihu - prow, along with the other carvings, contains the mana of the waka. It's NZNO's mandate from the members, guided by our Constitution and Strategic Plan

The kaihoe - paddlers, ensure NZNO's goals are met. They are the actively engaged members and staff

The riu - hull is the cradle of NZNO representing the membership

The hoe - paddles power the waka. The resources, structures, that support our activities

# Governance and Member Groups\*

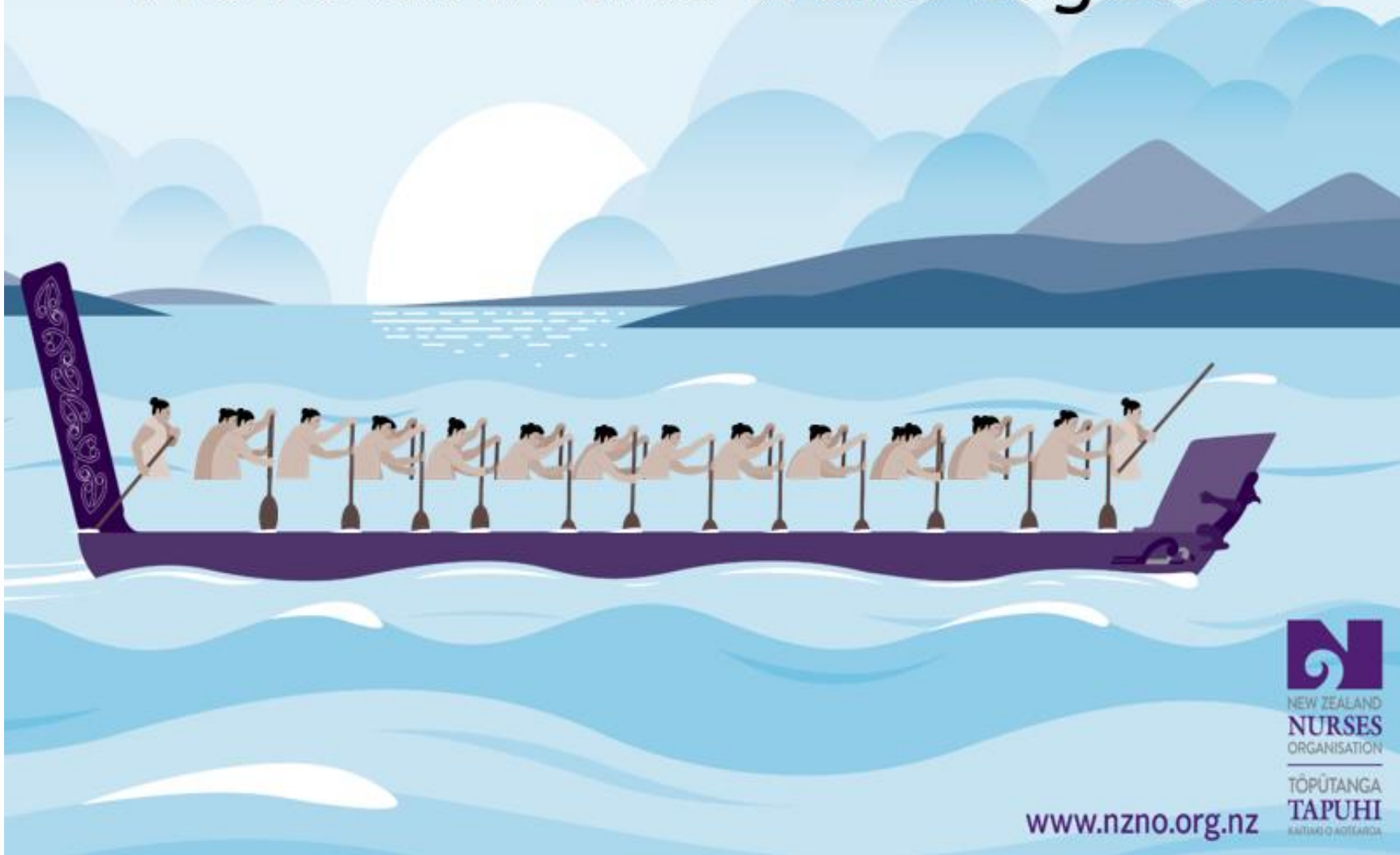


\*Diagram under review – not all groups included





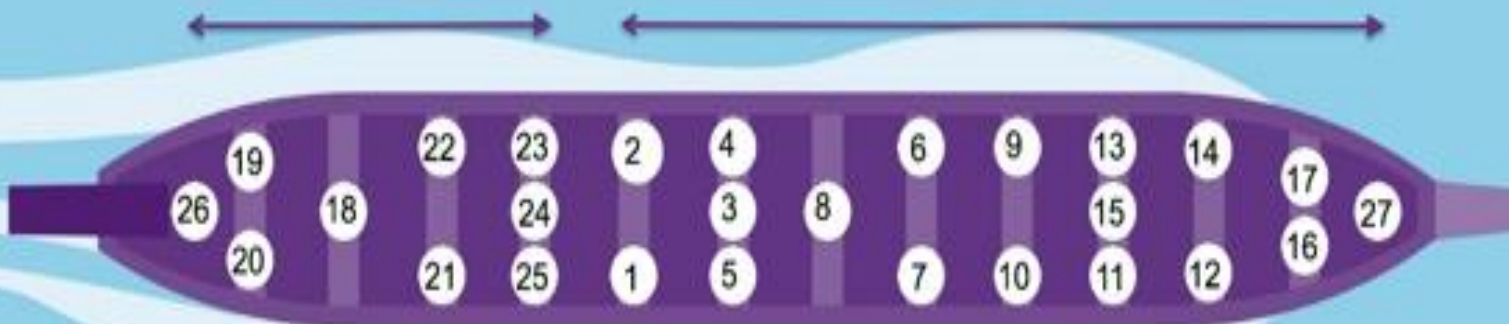
He waka eke noa  
*We're all in this waka together*





## Staff Structures

## Membership Structures



- 1 Member Support Centre
- 2 Membership
- 3 Health Professionals NZ
- 4 Workplaces and delegates
- 5 National Student Unit
- 6 NZNO Colleges and Sections
- 7 Te Rūnanga o Aotearoa NZNO
- 8 Regional Councils
- 9 Membership Committee

- 10 Te Poari
- 11 Tumu Whakarae
- 12 Kaiwhakahaere
- 13 Vice President
- 14 President
- 15 NZNO Board
- 16 Hui ā Tau
- 17 Annual General Meeting
- 18 Chief Executive Officer

- 19 Manager, Corporate Services
- 20 Senior Adviser, Human Resources
- 21 Manager & Associate, Nursing & Professional Services
- 22 Industrial Services Manager & Associate
- 23 Corporate Services
- 24 Industrial Services
- 25 Professional Services
- 26 Kaiārahi
- 27 Kaihautū

# Final thoughts

- We are your voice!
- Update your contact details with NZNO
- Read and ask questions
- Clarify things if you need
- Get involved
- Exercise your right to vote

**Remember, NZNO is a Membership led Organisation, and WE are the MEMBERS!**